



ASSOCIATION OF
SCIENCE-TECHNOLOGY CENTERS

Exploring U.S. Federal Funding Opportunities

NIH Science Education Partnership Award (SEPA)

Tony Beck, PhD
National Institute of Health (NIH)
beckl@mail.nih.gov

SEPA SCIENCE EDUCATION
PARTNERSHIP AWARD
SUPPORTED BY THE NATIONAL INSTITUTES OF HEALTH

Tuesday, July 18



R25 Research Education

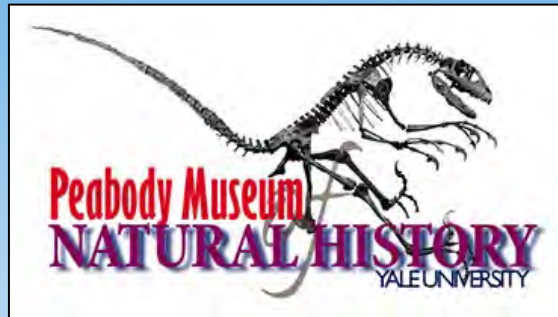
5 years, \$1.35M

Any area of NIH basic or medical research

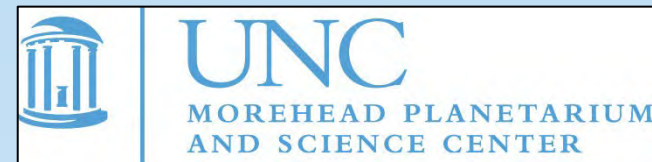
Funding Opportunity Announcement: PAR-20-153 (ended)

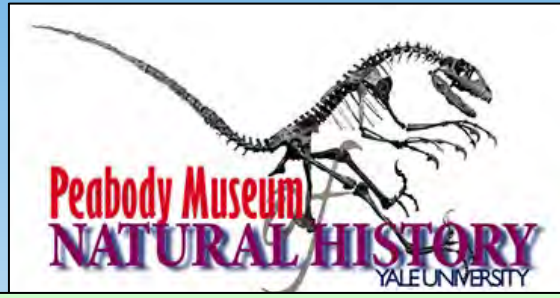
Next receipt date May 2023 (est.)





The Imaginarium
Science Discovery Center

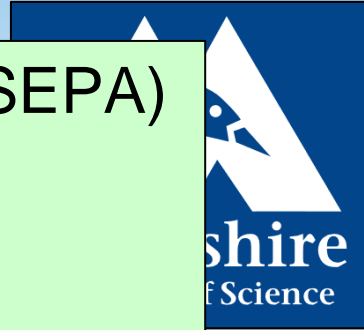




NIH Science Education Partnership Award (SEPA) funding to ASTC members

Duration	1991 – 2021
ASTC Members Funded	51
Estimated total funding	\$66M

SEPA-funded museum projects, listed on the SEPA website, <https://nihsepa.org/>



NIH: Museums and Libraries

NIH's mission is to seek fundamental knowledge about the nature and behavior of living systems and the application of that knowledge to enhance health, lengthen life, and reduce illness and disability.

SEPA ISE topics may include:

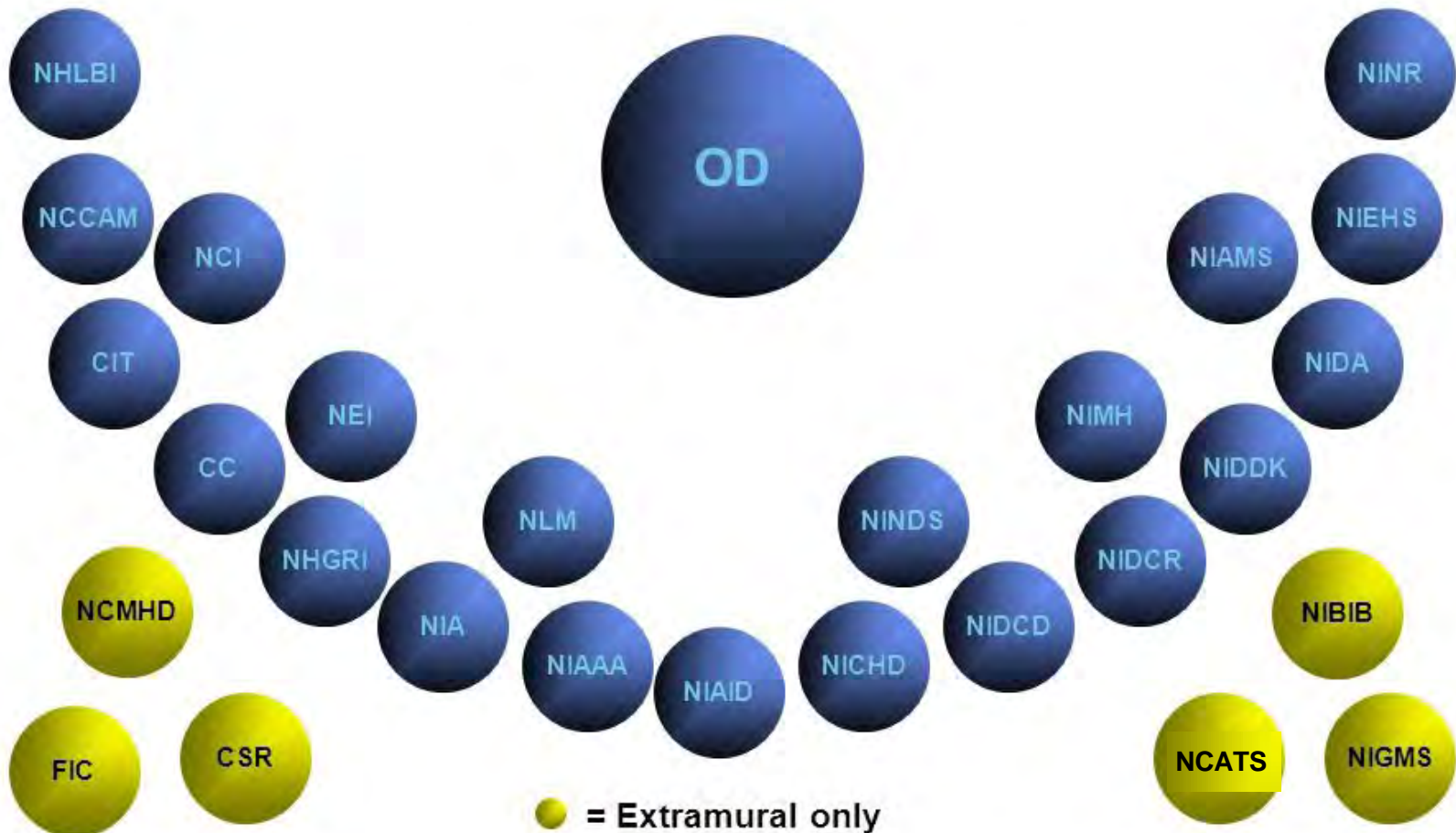
- Any area of NIH-supported basic and medical areas
- After school science activities
- Community health literacy
- Citizen science
- Bio-tinkering and maker movement



National Institutes of Health (NIH) Bethesda, Maryland



NIH consists of 27 Institutes and Centers

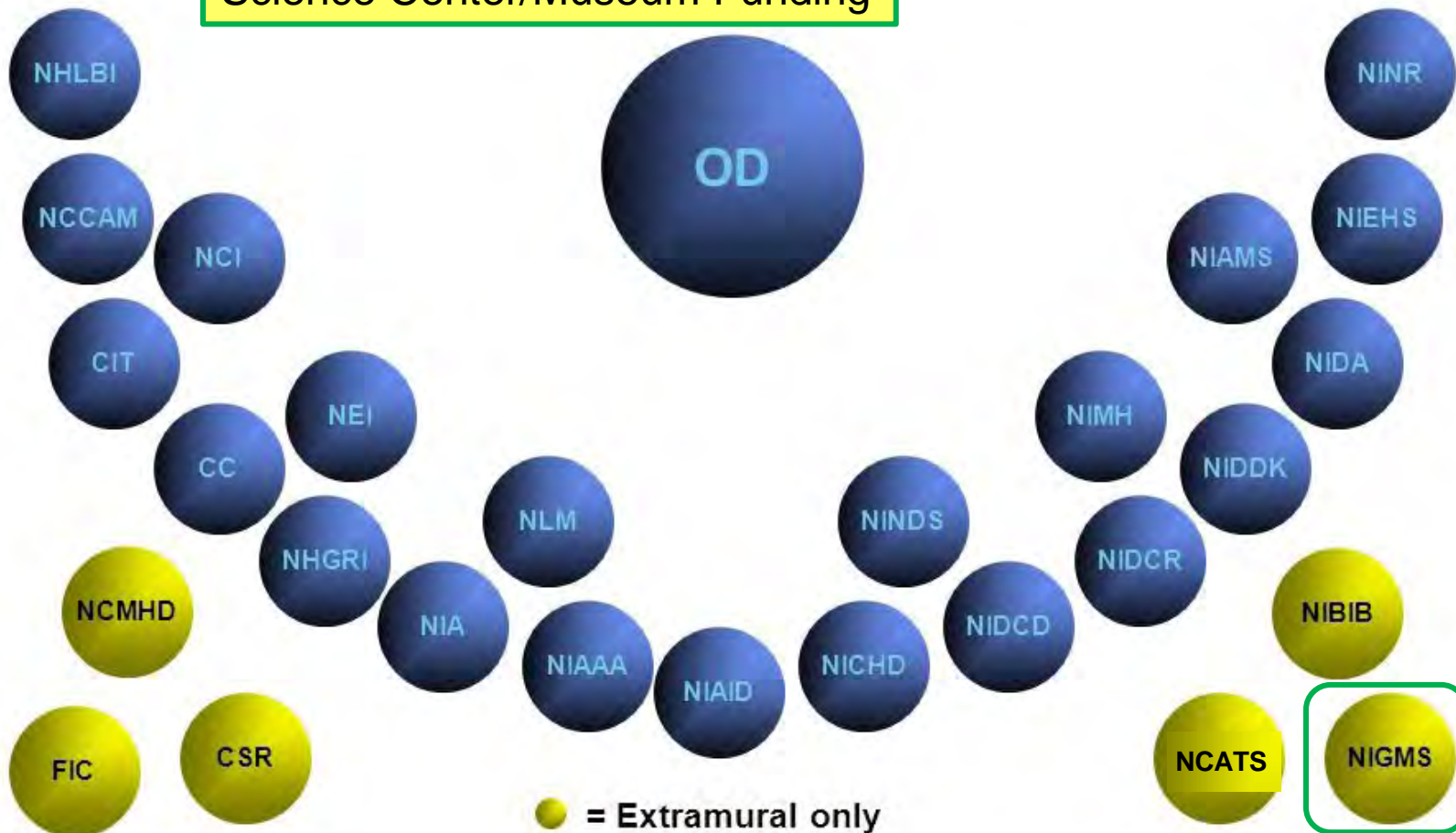


FY21 Budget = \$43B



NIH consists of 27 Institutes and Centers

Science Center/Museum Funding



FY21 Budget = \$43B





Federal Support for Libraries and Museums

In 2021, the Institute of Museum and Library Services (IMLS) awarded \$425.7 million through grantmaking, research and policy development, to advance, support, and empower America's museums, libraries, and related organizations.

[Apply For a Grant](#)

[Manage Your Award](#)



National Leadership Grants for Libraries, Laura Bush 21st Century Librarian Programs Now Accepting Applications



FCC and IMLS Sign Agreement to Promote Broadband Access



IMLS 250: All Stories. All People. All Places.

<https://www.ims.gov/>





Federal Support for Libraries and Museums

In 2021, the Institute of Museum and Library Services (IMLS) awarded \$425.7 million through grantmaking, research and policy development, to advance, support, and empower America's museums, libraries, and related organizations.

Apply For a Grant

Manage Your Award



National Leadership Grants for Libraries, Laura Bush 21st Century Librarian Programs Now Accepting Applications




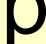
FCC and IMLS Sign Agreement to Promote Broadband Access

IMLS 250: All Stories. All People. All Places.

Fiscal Year 2021

IMLS Generates Impact

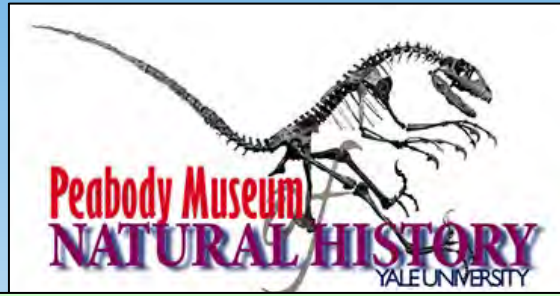
Total Awarded: \$425.7M

Grants To States Libraries	Library Services	Museum Services	Other Initiatives
 59 Awards \$168.8M Awarded N/A Applications / N/A Requested	 286 Awards \$32.3M Awarded 531 Applications / \$97.86M Requested	 275 Awards \$42.6M Awarded 943 Applications / \$154.03M Requested	 88 Awards \$181.9M Awarded 270 Applications / \$188.67M Requested

\$155K per award

<https://www.ims.gov/>





NIH Science Education Partnership Award (SEPA) funding to ASTC members

Duration	1991 – 2021
ASTC Members Funded	51
Estimated total funding	\$66M

SEPA-funded museum projects, listed on the SEPA website

<https://nihsepa.org/>

\$1.30M per award



**Children's
Museum
of Houston**



The Tech
Museum of Innovation

SEPA

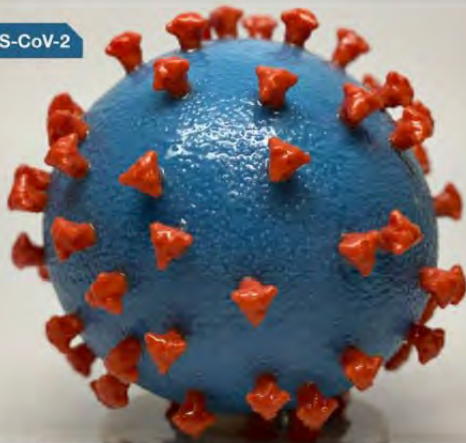
SCIENCE EDUCATION PARTNERSHIP AWARD
SUPPORTED BY THE NATIONAL INSTITUTES OF HEALTH

Search

Log In

SEPA Projects ▾ Resources ▾ Publications Videos ▾ News ▾ Annual Meeting Evaluation

Novel Coronavirus SARS-CoV-2



Information for Educators on Novel Coronavirus

Online lessons about COVID-19

Explore the Curriculum

Tufts Great Diseases program introduces a new curriculum that provides high school teachers with online lessons about COVID-19

Search Programs by State

View SEPA programs from as many as 40 states across the nation plus DC & Puerto Rico.

The SEPA Program

The Science Education Partnership Award (SEPA) Program funds innovative pre-kindergarten to grade 12 (P-12) science, technology, engineering and mathematics (STEM) and Informal Science Education (ISE) educational projects. SEPA projects create partnerships among biomedical and clinical researchers and teachers and schools, museums and science centers, media experts, and other educational organizations. SEPA K-12 resources target state and national K-12 standards for STEM teaching and learning and are rigorously evaluated for effectiveness. SEPA is sponsored by the National Institute of General Medical Sciences (NIGMS), a component of the NIH.

<https://www.nigms.nih.gov>

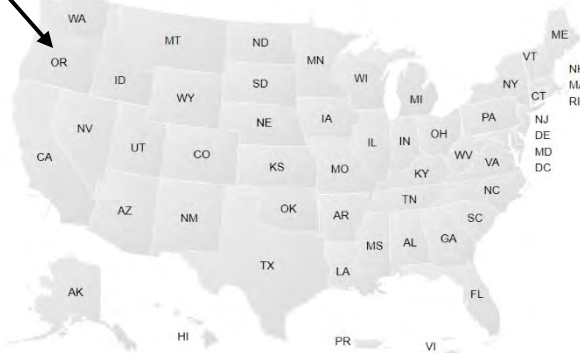
PATHWAYS

free basic biomedical science resources from NIGMS and Scholastic



Projects / Map

Filter by state:



Choose a State

Filter by state: Oregon



Expand Map

Oregon

Oregon

STEM Assessment and Reporting Tracker (START)

Oregon Health and Science University, Portland OR

R25GM129840-01 : 09/01/2018 - 07/31/2023

Interactive Family Learning in Support of Early Brain Development

Oregon Museum of Science and Industry, Portland OR

R25OD023738-01 : 09/07/2017 - 07/31/2022

CHIDR Chatter: Translating Community Research Data for Classroom Use

Oregon Health and Science University, Portland OR

R25OD010496-01 A1 : 04/01/2012 - 03/31/2017

The Zoo in You: Exploring the Human Microbiome

Oregon Museum of Science and Industry, Portland OR

R25RR032210-01 : 03/01/2011 - 02/29/2016

Teacher Institute for the Experience of Science

Oregon Health and Science University, Portland OR

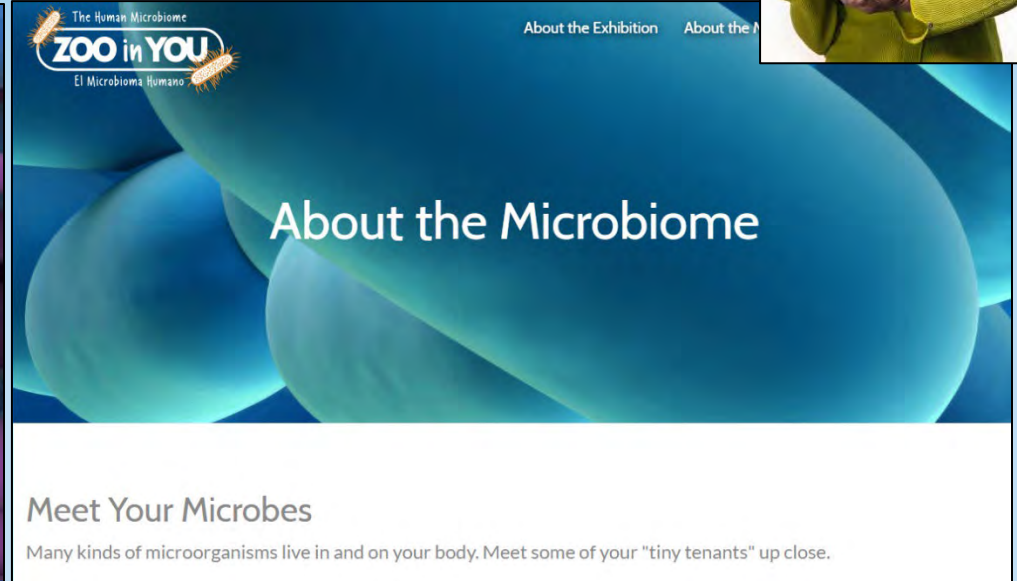
R25RR020443 : 08/01/2005 - 07/31/2010

The Zoo in You: Exploring the Human Microbiome

Oregon Museum of Science and Industry

<https://omsi.edu/exhibitions/zoo-in-you/>

PI:
Vicki
Coats



Your body is home to trillions and trillions of microbes. Explore the "zoo" inside of you in this traveling exhibit, produced by the Oregon Museum of Science and Industry (OMSI) and funded by NIH SEPA.

OMSI **SEPA** SCIENCE EDUCATION PARTNERSHIP AWARD
Supported by the National Institutes of Health

Interactive Family Learning in Support of Early Brain Development (2017-2022)



PI:
Vicki
Coats



<https://omsi.edu/products/brain-at-play-family-learning-brain-development>

SEPA SCIENCE EDUCATION
PARTNERSHIP AWARD
Supported by the National Institutes of Health

OMSI
Everyday Encounters with Science



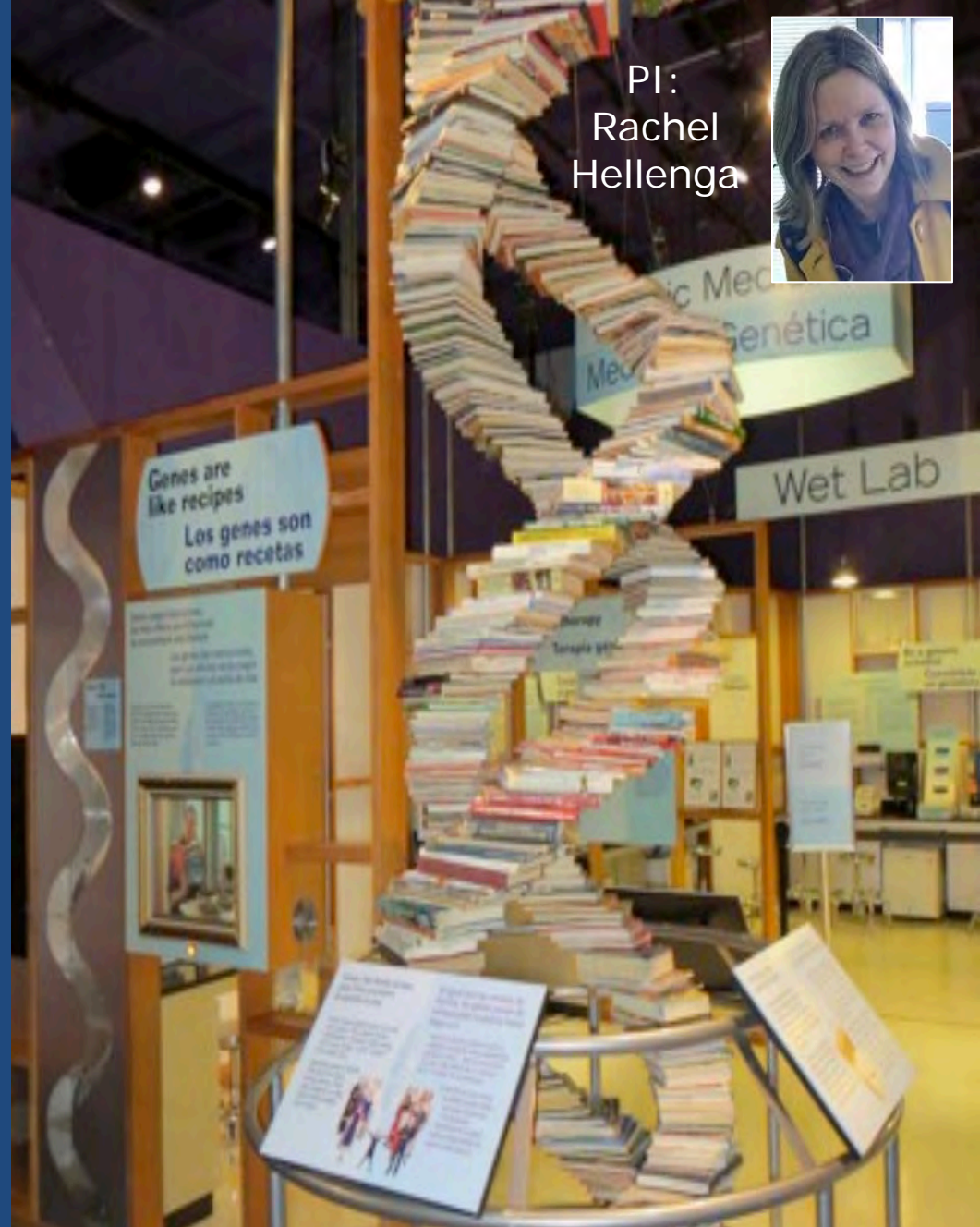


The Tech
Museum of Innovation

SEPA #1 (2002-2007)

Genetics: Technology with a Twist

- Built a permanent exhibition
- Established a program to bring Stanford graduate student volunteers to the museum
- Created an understanding genetics website



PI:
Rachel
Hellenga





The Tech
Museum of Innovation

PI:
Anja
Scholtz



SEPA #2 (2017-present)

Biohealth Learning Lab and Makerspace for the Community

- Activate and test a museum as a bio-makerspace
- Develop and evaluate a cohort of novel hands-on experiences
- Create resources for replication



SEPA SCIENCE EDUCATION
PARTNERSHIP AWARD
Supported by the National Institutes of Health

Microscope Imaging Station

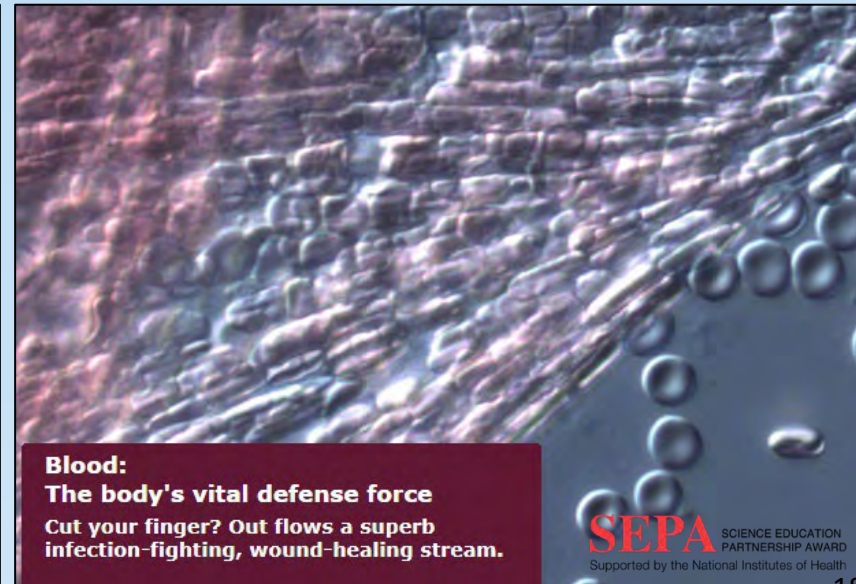
<http://www.exploratorium.edu/imaging-station/>

2000 - 2005

PI:
Charlie
Carlson



Zebrafish
A model for heart development



Blood:
The body's vital defense force
Cut your finger? Out flows a superb
infection-fighting, wound-healing stream.

SEPA SCIENCE EDUCATION
PARTNERSHIP AWARD
Supported by the National Institutes of Health



PI:
Charlie
Carlson



Microscope Imaging Station

<http://www.exploratorium.edu/imaging-station/>

2000 – 2005 → 2022



Zebrafish
A model for heart development



Blood:
The body's vital defense force
Cut your finger? Out flows a superb
infection-fighting, wound-healing stream.

SEPA SCIENCE EDUCATION PARTNERSHIP AWARD
Supported by the National Institutes of Health



Range of SEPA-Funded ISE

The Phenomenal **Genome**
Exploratorium, San Francisco CA
2019

The Exploratorium **Digital Teaching** Box Project: A Professional Development Tool
Exploratorium, San Francisco CA
2014

Preventable Differences: Exploring **Public Health Careers** with Black and Latino Youth
New York Hall of Science, Flushing Meadows-Corona Park NY
2021

Transmission: Astonishing Tales of **Human-Animal Diseases**
New York Hall of Science, Flushing Meadows-Corona Park NY
2016

Other SEPA projects in 2000, 2008

National **Traveling AIDS Exhibit** and Education Program
New York Hall of Science, Flushing Meadows-Corona Park NY
1991

SEPA SCIENCE EDUCATION
PARTNERSHIP AWARD
Supported by the National Institutes of Health



Science Café – Public Outreach

The screenshot shows the top navigation bar of the American Museum of Natural History website. It includes the museum's logo (150 YEARS AMERICAN MUSEUM OF NATURAL HISTORY), the operating hours (Open Wednesday–Sunday, 10 am–5:30 pm), and buttons for 'Become a Member' and 'Reserve Tickets'. A search icon and 'Sign In' link are also present. Below the navigation bar, the main heading 'SciCafe' is displayed, followed by the text 'Part of Adults'. The central image is a horizontal collage of four panels: a red, textured biological specimen; a close-up of a golden wheat ear; a pair of white gloves reaching towards each other; and a green praying mantis on a leaf.

Human Health Biodiversity and
Microbial Ecology: Strategies to
Educate

American Museum of Natural
History, New York NY

2014

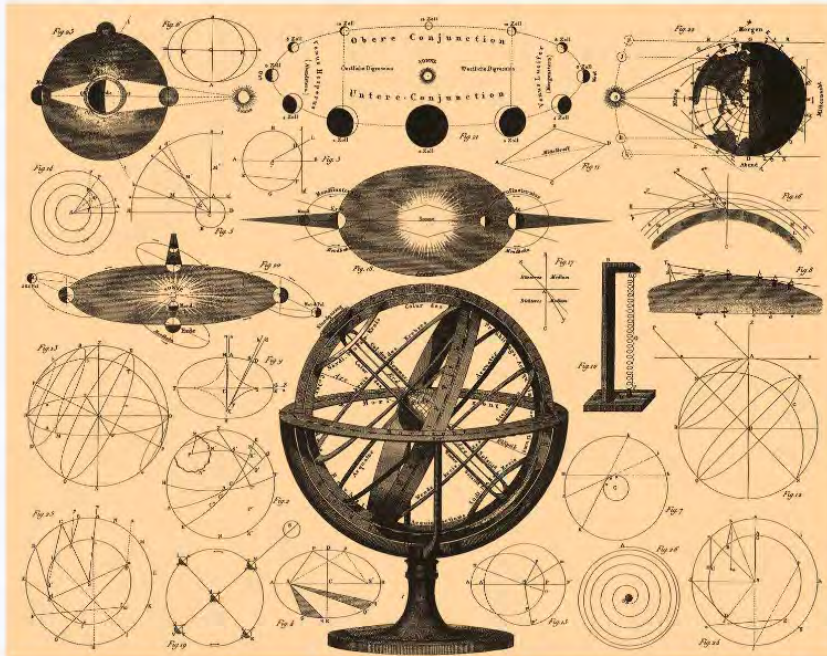
SEPA SCIENCE EDUCATION
PARTNERSHIP AWARD
Supported by the National Institutes of Health



Science Pub – Public Outreach



! Are you a member? [Log in](#) Not a member? [Sign up now](#)



Science Pub Portland: Leonardo da Vinci and the Art of Science

Empirical Theater

OMSI Science Pub - Empirical Theater | Aug 2, 7:00pm - 9:00pm

Other OMSI Pub Forum topics:

- Epigenetics
- Stem Cells

Human Health Biodiversity and Microbial Ecology: Strategies to Educate

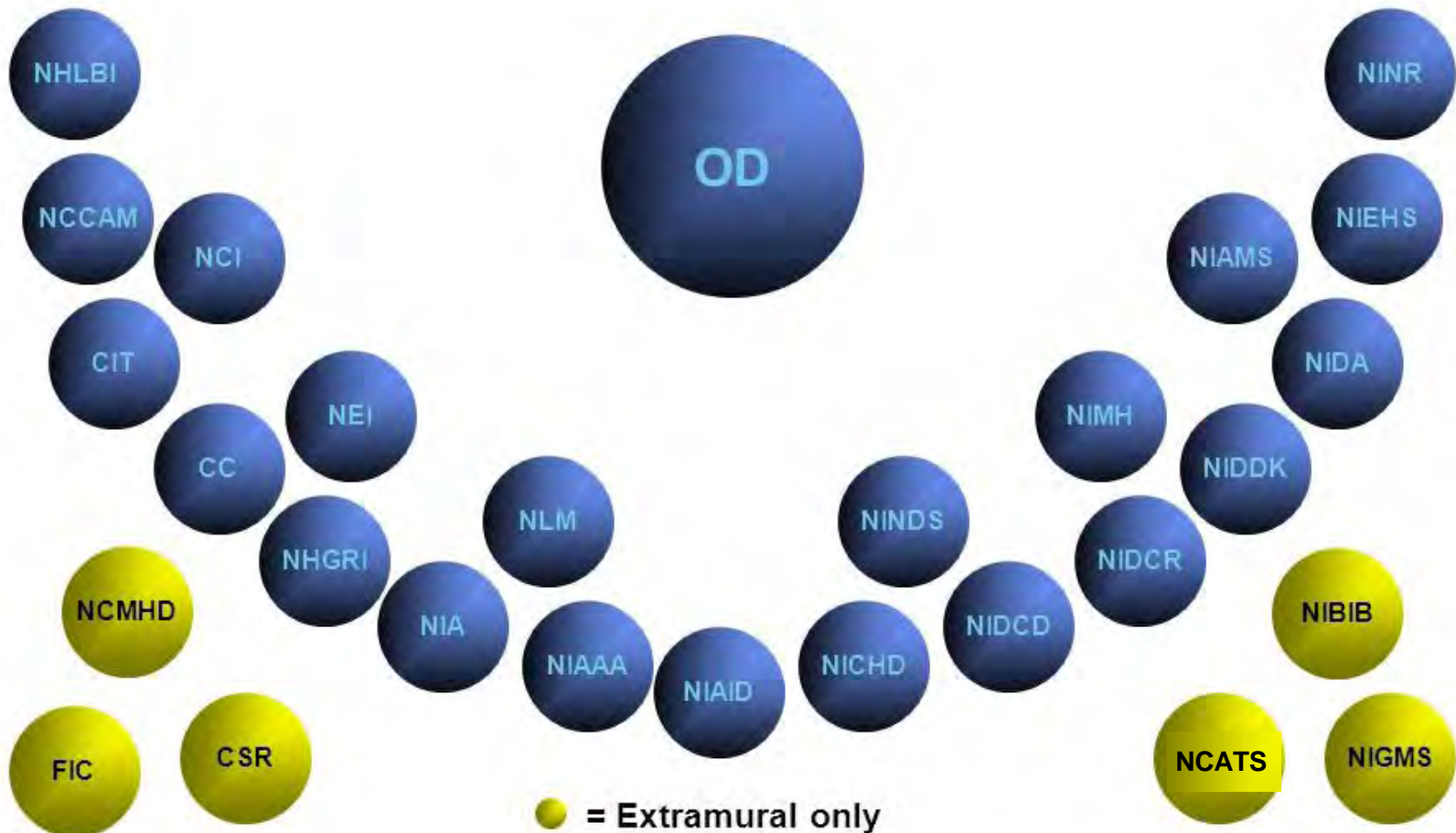
American Museum of Natural History, New York NY

2014

SEPA SCIENCE EDUCATION PARTNERSHIP AWARD
Supported by the National Institutes of Health



NIH consists of 27 Institutes and Centers



FY21 Budget = \$43B



NIH – Scientific Experts

The screenshot shows the NIH website header with the logo and tagline "National Institutes of Health Turning Discovery Into Health". A search bar is present in the top right. Below the header is a navigation menu with categories: Health Information, Grants & Funding, News & Events, Research & Training, Institutes at NIH, and About NIH. A COVID-19 banner is visible, providing links to COVID.gov, NIH Research information, Español, and NIH staff guidance. The main content area is titled "OFFICE OF COMMUNICATIONS & PUBLIC LIAISON". Under "About OCPL", the text states: "The Office of Communications and Public Liaison (OCPL) oversees communications on NIH programs and activities to the public, the media, and stakeholder communities." Below this, it says: "OCPL coordinates its activities with communication offices in the NIH's 27 Institutes and Centers." A "Resources" sidebar lists links such as "Clear Communication", "Health Information", "NIH All Staff NIH Only", "NIH Director's Blog", "NIH Director's page", "NIH News & Events", and "NIH News in Health".

<https://www.nih.gov/institutes-nih/nih-office-director/office-communications-public-liaison#:~:text=The%20Office%20of%20Communications%20and,NIH's%2027%20Institutes%20and%20Centers.>



SEPA Funding Opportunity Announcement (FOA)

Department of Health and Human Services

Part 1. Overview Information

Participating Organization(s)

National Institutes of Health ([NIH \(http://www.nih.gov\)](http://www.nih.gov))

Components of Participating Organizations

National Institute of General Medical Sciences ([NIGMS \(http://www.nigms.nih.gov\)](http://www.nigms.nih.gov))

Funding Opportunity Title

NIH Science Education Partnership Award (SEPA)(R25)

Funding Opportunity Announcement (FOA) Number

PAR-20-153

SEPA SCIENCE EDUCATION
PARTNERSHIP AWARD
Supported by the National Institutes of Health



Five Years
\$1.35M

